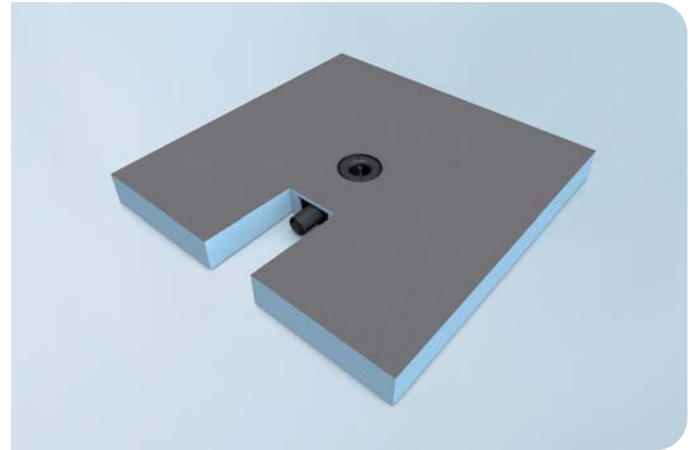


## Fundo Integro®

- Standard-compliant, flat complete system for flush-to-floor showers, with a total installation height of 90 mm



### General product description

Flush-to-floor shower element for direct tiling with integrated, horizontal, standard-compliant drain. Ideally suited for new builds, renovations and particularly for refurbishment of old buildings.

### Areas of application

- In publicly accessible buildings in accordance with DIN 18040 Part 1 and DIN EN 1253
- In accessible dwellings complying with DIN 18040 part 2 (Please see the Technical properties section for specifying the minimum tile size E.g.: for wheelchair access)
- As structural sealing in combination with tile or slab coverings for load classes A0 and A. More information can be found at [www.wedi.eu](http://www.wedi.eu)

### Product properties

Fundo Integro can be installed on almost any surface as an individual tileable floor-level shower system.

The system includes:

- A waterproof rigid foam core with a special, resistant and glass fibre reinforced cement coating
- A defined and absolutely even surface slope
- A flat, fully integrated, standard-compliant, horizontal drain

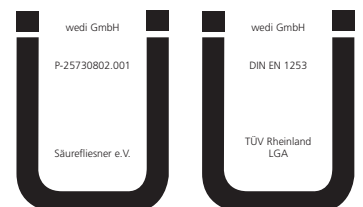
### Sub-surface requirements, processing

Information on installation and surface requirements can be found in the fitting instructions. These are enclosed with the element and are available online at [www.wedi.eu](http://www.wedi.eu)



\* Information sur le niveau d'émission de substances volatiles dans l'air intérieur, présentant un risque de toxicité par inhalation, sur une échelle de classe allant A+ (très faibles émissions) à C (fortes émissions).

Information on the emission level of volatile substances in indoor air which present a risk of inhalation toxicity, on a scale of A+ (very low emissions) to C (high emissions).



## Technical properties of Fundo Integro

---

Wheelchair load-bearing from minimum tile size	50 x 50 mm
Glass mosaic (thickness: 3 mm) from minimum size	20 x 20 mm
Minimum installation height	90 mm

Dimensions of Fundo Integro complete systems can be customised on site, but the geometry of the elements must be maintained.

## Technical properties of drain

---

Frame for the stainless steel grid (included in the scope of delivery)	120 x 120 x 4 mm
Stainless steel grid V <sub>2</sub> A	115 x 115 x 2,5 mm
Levelling frame	ø 115 x 40 mm
Drain performance DIN EN 1253-1	48 l/min; 0,8 l/s
Connection pipe (ABS)	DN 50
Drain capacity in accordance with DIN EN 1253-1	50 mm
Slope connection piece	1,5%

The drain has been tested by TÜV Rheinland and fulfils all of the requirements of DIN EN 1253.

## Technical properties of raw foam building board systems

---

Extruded polystyrene rigid foam core	XPS
Long-term compressive strength (50 years) $\leq$ 2% compression EN 1606	0,08 N/mm <sup>2</sup>
Compressive resistance at 10% compression EN 826	0,25 N/mm <sup>2</sup>
Thermal conductivity EN 13164	0,036 W/mK
Bulk density EN 1602	32 kg/m <sup>3</sup>
Temperature limits	-50°C / +75°C
Fire behaviour EN 13501-1	E
Waterproof tested to	1,5 bar

## Packing

---

1 box

## Storage

---

Fundo Integro should always be stored flat. The element must be protected against direct sunlight and moisture.

Information about finishing and application options for wedi products, technical recommendations or advice and other information provided by our employees (technical usage advice) is accurate to the best of our knowledge, but is non-binding and is given with the exclusion of any liability. It does not exempt our customers and their buyers from carrying out their own checks and trials on the suitability of the products for the intended processes and purposes.