



Product Service

C E R T I F I C A T E

No. Z1A 17 03 90361 003

Holder of Certificate: **Kinnarps AB**Industrigatan 1
521 88 Kinnarp
SWEDEN

Factory(ies):

90361

Certification Mark:



Product:

Office cabinets

Model(s):

Space

Parameters:

Height: 378 - 2268 mm
Width: 400, 800, 1000, 1200, 1600 mm
Depth: 400, 330, 600, 800, 900 mm
Type of fronts:
Open, open cube
Drawer
Doors
Personal storage unit
Doors with glass doors
Filing frame drawer
Glass doors
Pattern doors
Tambour vertical, tambour vertical and drawer
Tambour horizontal
Wooden drawer
Wall hanging

More parameters see attachment

Tested according to:

DIN EN 14073-2:2004
DIN EN 14073-3:2004
DIN EN 14074:2004
DIN-Fachbericht 147:2006
AfPS GS 2014:01 PAK

The product meets the safety and health requirements of the German Product Safety Act section 20 to 22 ProdSG. The certification marks shown above can be affixed on the product. It is not permitted to alter the certification marks in any way. In addition the certificate holder must not transfer the certificate to third parties. This certificate is valid until the listed date, unless it is cancelled earlier. See also notes overleaf.

Test report no.:

713094538

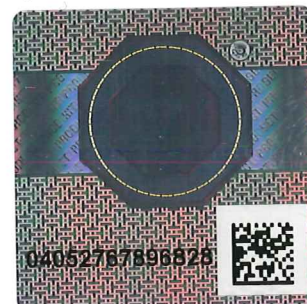
Valid until:

2022-03-16

Date, 2017-03-20

(Michael Weber)

Page 1 of 12





Space – office cabinets

Product overview:

Article group	Article name	Front	Height [mm]	Width [mm]	Depth [mm]
S1P	S1P400 DO	DO	378	400	400
S1P	S1P400 O	O	378	400	400
S1P	S1P400 OWH	O WH	378	400	400
S1P	S1P400A	O	378	400	400
S1P	S1P400A OWH	O WH	378	400	400
S1P	S1P400DO1	DO1	378	400	400
S1P	S1PEM400A	O	378	400	400
S1P	S1P800 DO	DO	378	800	400
S1P	S1P800 O	O	378	800	400
S1P	S1P800 OWH	O WH	378	800	400
S1P	S1P800A	O	378	800	400
S1P	S1P800A OWH	O WH	378	800	400
S1P	S1P800DO2	DO2	378	800	400
S1P	S1P800PADO	PADO	378	800	400
S1P	S1P800TAHP	TAHP	378	800	400
S1P	S1P800TAHP WH	TAHP WH	378	800	400
S1P	S1P800TAHW	TAHW	378	800	400
S1P	S1P800TAHW WH	TAHW WH	378	800	400
S1PE	S1PE800 O	O	378	800	400
S1PE	S1PE800 O FC	O	378	800	400
S1PE	S1PE800TA	TA	378	800	400
S1PE	S1PE800TA FC	TA	378	800	400
S1P	S1PEM800A	O	378	800	400
S1P	S1PEM800BA	BA	378	800	330
S1P	S1P1000 DO	DO	378	1000	400
S1P	S1P1000 O	O	378	1000	400
S1P	S1P1000 OWH	O WH	378	1000	400
S1P	S1P1000DO2	DO2	378	1000	400
S1P	S1P1000TAHP	TAHP	378	1000	400
S1P	S1P1000TAHP WH	TAHP WH	378	1000	400
S1P	S1P1000TAHW	TAHW	378	1000	400
S1P	S1P1000TAHW WH	TAHW WH	378	1000	400



Article group	Article name	Front	Height [mm]	Width [mm]	Depth [mm]
S1P	S1P1200 O	O	378	1200	400
S1P	S1P1200 OC	OC	378	1200	400
S1P	S1P1200 OWH	O WH	378	1200	400
S1P	S1P1200DO3	DO3	378	1200	400
S1P	S1P1200TAHP	TAHP	378	1200	400
S1P	S1P1200TAHP WH	TAHP WH	378	1200	400
S1P	S1P1200TAHW	TAHW	378	1200	400
S1P	S1P1200TAHW WH	TAHW WH	378	1200	400
S2L	S2L1000 DO	DO	695	1000	400
S2L	S2L1000 DO2	DO2	695	1000	400
S2L	S2L1000 FF	FF	695	1000	400
S2L	S2L1000 O	O	695	1000	400
S2L	S2L1000PADO	PADO	695	1000	400
S2L	S2L1000TAHP	TAHP	695	1000	400
S2L	S2L1000TAHW	TAHW	695	1000	400
S2L	S2L1200 DO	DO	695	1200	400
S2L	S2L1200 DO2	DO2	695	1200	400
S2L	S2L1200 DO3	DO3	695	1200	400
S2L	S2L1200 O	O	695	1200	400
S2L	S2L1200D12WD	D12WD	695	1200	400
S2L	S2L1200D2WD	D2WD	695	1200	400
S2L	S2L1200D3WD	D3WD	695	1200	400
S2L	S2L1200D6WD	D6WD	695	1200	400
S2L	S2L1200D8WD	D8WD	695	1200	400
S2L	S2L1200TAHP	TAHP	695	1200	400
S2L	S2L1200TAHW	TAHW	695	1200	400
S2L	S2L120D4WD	D4WD	695	1200	400
S2L	S2L1600 O	O	695	1600	400
S2L	S2L1600TAHP	TAHP	695	1600	400



Article group	Article name	Front	Height [mm]	Width [mm]	Depth [mm]
S2L	S2L1600TAHW	TAHW	695	1600	400
S2L	S2L400 DO	DO	695	400	400
S2L	S2L400 O	O	695	400	400
S2L	S2L400D1WD	D1WD	695	400	400
S2L	S2L400D2	D2	695	400	400
S2L	S2L400D2WD	D2WD	695	400	400
S2L	S2L400D4	D4	695	400	400
S2L	S2L400D4WD	D4WD	695	400	400
S2L	S2L400DO1	DO1	695	400	400
S2L	S2L800 DO	DO	695	800	400
S2L	S2L800 DO2	DO2	695	800	400
S2L	S2L800 FF	FF	695	800	400
S2L	S2L800 O	O	695	800	400
S2L	S2L800D2WD	D2WD	695	800	400
S2L	S2L800D4WD	D4WD	695	800	400
S2L	S2L800D8WD	D8WD	695	800	400
S2L	S2L800PADO	PADO	695	800	400
S2L	S2L800TAHP	TAHP	695	800	400
S2L	S2L800TAHW	TAHW	695	800	400
S2P	S2P1000 DO	DO	756	1000	400
S2P	S2P1000 DO2	DO2	756	1000	400
S2P	S2P1000 DO4	DO4	756	1000	400
S2P	S2P1000 FF	FF	756	1000	400
S2P	S2P1000 GDO	GDO	756	1000	400
S2P	S2P1000 O	O	756	1000	400
S2P	S2P1000PADO	PADO	756	1000	400
S2P	S2P1000TAHP	TAHP	756	1000	400
S2P	S2P1000TAHW	TAHW	756	1000	400
S2P	S2P1200 DO	DO	756	1200	400
S2P	S2P1200 DO2	DO2	756	1200	400
S2P	S2P1200 DO3	DO3	756	1200	400
S2P	S2P1200 DO6	DO6	756	1200	400
S2P	S2P1200 O	O	756	1200	400
S2P	S2P1200 OC	OC	756	1200	400
S2P	S2P1200D12WD	D12WD	756	1200	400
S2P	S2P1200D2WD	D2WD	756	1200	400



Article group	Article name	Front	Height [mm]	Width [mm]	Depth [mm]
S2P	S2P1200D3WD	D3WD	756	1200	400
S2P	S2P1200D4WD	D4WD	756	1200	400
S2P	S2P1200D6WD	D6WD	756	1200	400
S2P	S2P1200D8WD	D8WD	756	1200	400
S2P	S2P1200TAHP	TAHP	756	1200	400
S2P	S2P1200TAHW	TAHW	756	1200	400
S2P	S2P1600 O	O	756	1600	400
S2P	S2P1600TAHP	TAHP	756	1600	400
S2P	S2P1600TAHW	TAHW	756	1600	400
S2P	S2P400 DO	DO	756	400	400
S2P	S2P400 DO1	DO1	756	400	400
S2P	S2P400 DO2	DO2	756	400	400
S2P	S2P400 GDO	GDO	756	400	400
S2P	S2P400 O	O	756	400	400
S2P	S2P400A	O	756	400	400
S2P	S2P400A OWH	O WH	756	400	400
S2P	S2P400D1WD	D1WD	756	400	400
S2P	S2P400D2	D2	756	400	400
S2P	S2P400D2WD	D2WD	756	400	400
S2P	S2P400D4	D4	756	400	400
S2P	S2P400D4WD	D4WD	756	400	400
S2P	S2P800 DO	DO	756	800	400
S2P	S2P800 DO2	DO2	756	800	400
S2P	S2P800 DO4	DO4	756	800	400
S2P	S2P800 FF	FF	756	800	400
S2P	S2P800 GDO	GDO	756	800	400
S2P	S2P800 O	O	756	800	400
S2P	S2P800A	O	756	800	400
S2P	S2P800A OWH	O WH	756	800	400
S2P	S2P800BA	BA	756	800	330
S2P	S2P800D2WD	D2WD	756	800	400
S2P	S2P800D4WD	D4WD	756	800	400
S2P	S2P800D8WD	D8WD	756	800	400
S2P	S2P800PADO	PADO	756	800	400



Article group	Article name	Front	Height [mm]	Width [mm]	Depth [mm]
S2P	S2P800TAHP	TAHP	756	800	400
S2P	S2P800TAHW	TAHW	756	800	400
S2PDE	S2PDE800TAD	TAD	934	800	400
S2PE	S2PE800 O	O	807	800	400
S2PE	S2PE800 O FC	O	807	800	400
S2PE	S2PE800TA	TA	807	800	400
S2PE	S2PE800TA FC	TA	807	800	400
S2P	S2PEM400A	O	756	400	400
S2P	S2PEM800 A	O	756	800	330
S2P	S2PEM800BA	BA	756	800	330
S2PM	S2PM400TAD	2PM TAD	1059	400	400
S2PM	S2PMT400TAD	2PMT TAD	1081	400	400
S2PT	S2PT800 O	O	740	800	400
S2PT	S2PT800DO	DO	740	800	400
S3L	S3L 1200 DO3	DO3	1005	1200	400
S3L	S3L 400DO	DO	1005	400	400
S3L	S3L1000 DO	DO	1005	1000	400
S3L	S3L1000 DO2	DO2	1005	1000	400
S3L	S3L1000 FF	FF	1005	1000	400
S3L	S3L1000 O	O	1005	1000	400
S3L	S3L1000TAHP	TAHP	1005	1000	400
S3L	S3L1000TAHW	TAHW	1005	1000	400
S3L	S3L1200 DO	DO	1005	1200	400
S3L	S3L1200 DO2	DO2	1005	1200	400
S3L	S3L1200 O	O	1005	1200	400
S3L	S3L1200TAHP	TAHP	1005	1200	400
S3L	S3L1200TAHW	TAHW	1005	1200	400
S3L	S3L1600 O	O	1005	1600	400
S3L	S3L1600TAHP	TAHP	1005	1600	400
S3L	S3L1600TAHW	TAHW	1005	1600	400
S3L	S3L400 DO1	DO1	1005	400	400
S3L	S3L400 O	O	1005	400	400
S3L	S3L800 DO	DO	1005	800	400



Article group	Article name	Front	Height [mm]	Width [mm]	Depth [mm]
S3L	S3L800 DO2	DO2	1005	800	400
S3L	S3L800 FF	FF	1005	800	400
S3L	S3L800 O	O	1005	800	400
S3L	S3L800TAHP	TAHP	1005	800	400
S3L	S3L800TAHW	TAHW	1005	800	400
S3P	S3P1000 DO	DO	1134	1000	400
S3P	S3P1000 DO2	DO2	1134	1000	400
S3P	S3P1000 DO6	DO6	1134	1000	400
S3P	S3P1000 FF	FF	1134	1000	400
S3P	S3P1000 GDO	GDO	1134	1000	400
S3P	S3P1000 O	O	1134	1000	400
S3P	S3P1000PADO	PADO	1134	1000	400
S3P	S3P1000TAHP	TAHP	1134	1000	400
S3P	S3P1000TAHW	TAHW	1134	1000	400
S3P	S3P1200 DO	DO	1134	1200	400
S3P	S3P1200 DO2	DO2	1134	1200	400
S3P	S3P1200 DO3	DO3	1134	1200	400
S3P	S3P1200 DO9	DO9	1134	1200	400
S3P	S3P1200 O	O	1134	1200	400
S3P	S3P1200 OC	OC	1134	1200	400
S3P	S3P1200TAHP	TAHP	1134	1200	400
S3P	S3P1200TAHW	TAHW	1134	1200	400
S3P	S3P1600 O	O	1134	1600	400
S3P	S3P1600TAHP	TAHP	1134	1600	400
S3P	S3P1600TAHW	TAHW	1134	1600	400
S3P	S3P400 DO	DO	1134	400	400
S3P	S3P400 DO1	DO1	1134	400	400
S3P	S3P400 DO3	DO3	1134	400	400
S3P	S3P400 GDO	GDO	1134	400	400
S3P	S3P400 O	O	1134	400	400
S3P	S3P800 DO	DO	1134	800	400



Article group	Article name	Front	Height [mm]	Width [mm]	Depth [mm]
S3P	S3P800 DO2	DO2	1134	800	400
S3P	S3P800 DO6	DO6	1134	800	400
S3P	S3P800 FF	FF	1134	800	400
S3P	S3P800 GDO	GDO	1134	800	400
S3P	S3P800 O	O	1134	800	400
S3P	S3P800PADO	PADO	1134	800	400
S3P	S3P800TAHP	TAHP	1134	800	400
S3P	S3P800TAHW	TAHW	1134	800	400
S4P	S4P1000 DO	DO	1512	1000	400
S4P	S4P1000 DO2	DO2	1512	1000	400
S4P	S4P1000 DO8	DO8	1512	1000	400
S4P	S4P1000 O	O	1512	1000	400
S4P	S4P1200 DO	DO	1512	1200	400
S4P	S4P1200 DO12	DO12	1512	1200	400
S4P	S4P1200 DO2	DO2	1512	1200	400
S4P	S4P1200 DO3	DO3	1512	1200	400
S4P	S4P1200 O	O	1512	1200	400
S4P	S4P400 DO	DO	1512	400	400
S4P	S4P400 DO1	DO1	1512	400	400
S4P	S4P400 DO4	DO4	1512	400	400
S4P	S4P400 O	O	1512	400	400
S4P	S4P400W	W	1512	400	600
S4P	S4P800 DO	DO	1512	800	400
S4P	S4P800 DO2	DO2	1512	800	400
S4P	S4P800 DO8	DO8	1512	800	400
S4P	S4P800 O	O	1512	800	400
S4P	S4P800BA	BA	1512	800	330
S4P	S4P800PADO	PADO	1512	800	400
S5P	S5P1000 DO	DO	1890	1000	400
S5P	S5P1000 DOG	DOG	1890	1000	400
S5P	S5P1000 GDO	GDO	1890	1000	400
S5P	S5P1000 O	O	1890	1000	400
S5P	S5P1200 DO	DO	1890	1200	400
S5P	S5P1200 O	O	1890	1200	400
S5P	S5P400 DO	DO	1890	400	400
S5P	S5P400 GDO	GDO	1890	400	400
S5P	S5P400 O	O	1890	400	400
S5P	S5P800 DO	DO	1890	800	400



Article group	Article name	Front	Height [mm]	Width [mm]	Depth [mm]
S5P	S5P800 GDO	GDO	1890	800	400
S5P	S5P800 O	O	1890	800	400
S6P	S6P1000 DO	DO	2268	1000	400
S6P	S6P1000 GDO	GDO	2268	1000	400
S6P	S6P1000 O	O	2268	1000	400
S6P	S6P1200 O	O	2268	1200	400
S6P	S6P400 DO	DO	2268	400	400
S6P	S6P400 GDO	GDO	2268	400	400
S6P	S6P400 O	O	2268	400	400
S6P	S6P800 DO	DO	2268	800	400
S6P	S6P800 GDO	GDO	2268	800	400
S6P	S6P800 O	O	2268	800	400
SAFU	SAFU	-----	985	398	381
SAFU	SAFU FM	-----	1000	398	381
SBRIDGE	SBRIDGE 800	O	189	800	400
SBU	SBU D2	D2	367.5	374	315
SBU	SBU D2WH	D2 WH	367.5	374	315
SBU	SBU D3	D3	367.5	374	315
SBU	SBU D3WH	D3 WH	367.5	374	315
SBU	SBU DH	-----	367.5	374	315
SBU	SBU DO	DO	367.5	374	315
SBU	SBU DOWH	DO WH	367.5	374	315
SBU	SBU O	O	367.5	374	298
SBU	SBU OWH	O WH	367.5	374	298
SDU	SDU	-----	335	374	310
SISLAND	SISLAND1610	-----	1066	1600	1000
SISLAND	SISLAND168	-----	1066	1600	800
SISLAND	SISLAND2010	-----	1066	2000	1000
SISLAND	SISLAND208	-----	1066	2000	800
SPOC	SPOC 800H	H	1245	400	800
SPOC	SPOC 800H DUO	H DUO	1245	400	800
SPOC	SPOC 800HW	H W	1245	400	800
SPOC	SPOC 800L	L	739	400	800
SPOC	SPOC 900 HW	H W	1245	400	900
SPOC	SPOC 900H	H	1245	400	900
SPOC	SPOC 900H DUO	H DUO	1245	400	900
SPOC	SPOC 900L	L	739	400	900
SQF	SQF400	-----	372	398	398
SQF	SQF800	-----	372	798	398

Attachment to certificate no. Z1A 17 03 90361 003



Product Service

Type of front	Description
O	Open
OC	Open cube
D...	Drawer
DO	Doors
DO...	Personal storage unit with number of doors
DOG	Doors with glass doors
FF	Filing frame drawer
GDO	Glass doors
PADO	Pattern doors
TA	Tambour vertical
TAD	Tambour vertical and drawer
TAH	Tambour horizontal
WD	Wooden drawer
WH	Wall hanging
... - number of doors	

Option on top:

STOP = flat top without pre-drilled holes for extension

NCC = ready for connection without cover cap

CC = ready for connection with cover caps. The cover caps are white for white cabinets and black for all other colours

PSQF = Pre-drilled for Q frames (Only carcasses 400x400 and 400x800 mm up to 3P)

Option on front:

DO:

Standard hinges are concealed and integrated with soft closing and with opening angle of 110°

Option: Hinges with visible knuckle, opening angle of 270°

Option: Pattern door PADO (only with standard hinges 110°)

Option: NL = no lock, L = lock, SL = espagnolette lock

GDO:

Standard hinges are concealed and integrated with soft closing and with opening angle of 110°

Option: Hinges with visible knuckle, opening angle of 270°

Option: NL = no lock, L = lock, SL = espagnolette lock

DOG:

Only hinges are concealed and integrated with soft closing and with opening angle of 110°

Option: NL = no lock, L = lock, SL = espagnolette lock

DO/G DO angle door:

Right hung door is standard. Left hung door is an option.

Page 10 of 12

Date: 2017-03-20



DO... = personal storage unit (lockers):

Only hinges are concealed and integrated with soft closing and with opening angle of 110° Product Service

Right hung door is standard.

Option: DUCO chess patterned

Option: Mail slot MS

Option: L = lock, PL = padlock ready, CL = combination lock

D:

Option: NL = no lock, L = lock

Only the upper drawer is lockable.

WD:

Option: NL = no lock

FF:

Option: Soft closing SC

Option: Metal filing drawer SMD

Option: Folder stays SMDD

Option: NL = no lock, L = lock

TA, TAH:

Option: Plastic or wooden tambour

Option: NL = no lock, L = lock

Shelf:

Option: SWS = Space wooden shelf

Option: SWRS = Space wooden reinforced shelf

Option: SMS = Space metal shelf

Option: SLS = Space lateral shelf

Type of base:

PLBA = Plint base

LA = Leg angular

LR = Leg round

LAW = Leg angular wood (not available to BA)

RLA-CLR = Leg-reduction, leg-angular – connection left and right

RLR-CLR = Leg-reduction, leg-round– connection left and right

RLAW-CLR = Leg-reduction, leg-angular wood– connection left and right

MOB = Mobile base

LMO = Low Mobile base (only for cabinet with WD drawer)

LMOF = Low Mobile base with frame (only for cabinet with WD drawer)

WH = wall hanging

CN = cable net only on leg frame LA, LR, LAW

Attachment to certificate no. Z1A 17 03 90361 003

Product Service

Base plate options:

OFC = Ready for connection (Stacking)

ONC = Undrilled base bottom (prima base)

OPSQF = Ready for Q frame (only for 1P, 2L, 2P width 400 and 800 mm)

Type of hole pattern for shelves:

Complete hole pattern = CHP only S1P, S2P, S3P, S2L, S3L (not for FF, 2PM400, S4P, S5P, S6P)

Set of hole pattern only S4P, S5P, S6P

Fixed shelf = FS only S1P, S2P, S3P, S2L, S3L

Back panel:

Standard: BALAM white laminate

Option:

BALAM = laminate

BAVEN= veneer (not available in all sizes)

BALAM AC = accent colours

BAAC = 8 mm acrylic (not available in all sizes)

BAWH = 8 mm white board (not available in all sizes)

Add on back:

BAFA = back panel fabric (not available in all sizes)

Only blazer mélange fabric

Handle option:

Hand 4 (not available on GDO / DOG)

Hand 5

Hand 6 (Hand 6 silver is standard)

Hand 7

Hand 8

Hand 9

Hand 10

Hand 12