

SOCIAL HOUSING FOR TOMORROW



MAKE YOUR COMMUNITY TODAY STAND OUT TOMORROW

All living space needs to be comfortable, inviting and good-looking. So the aesthetics of residential buildings and areas are important. Even more important is their ability to retain their initial good looks for a long time, with minimum maintenance. This ensures continuous use of the building, without frequent interruptions for costly repairs, renovations and upgrades. Let us show you how this ambitious goal for tomorrow can be started today.



LONG LASTING RESIDENTIAL AREAS WITH TRESPA

Trespa is at the forefront of cutting-edge building techniques. The company has many years of experience in the social housing sector, both in new build and renovation projects with wide networks of architects and local installers. With a strong focus on service, Trespa provides answers and information to support customers during all phases of a project.

Trespa® Meteon® is a decorative high-pressure compact laminate (HPL) with an integral surface manufactured using Trespa's unique in-house technology, Electron Beam Curing (EBC). The blend of up to 70% natural fibres and thermosetting resins, manufactured under high pressures and temperatures yields highly stable dense panels. Trespa® Meteon® architectural panels are designed for exterior (cladding) applications.



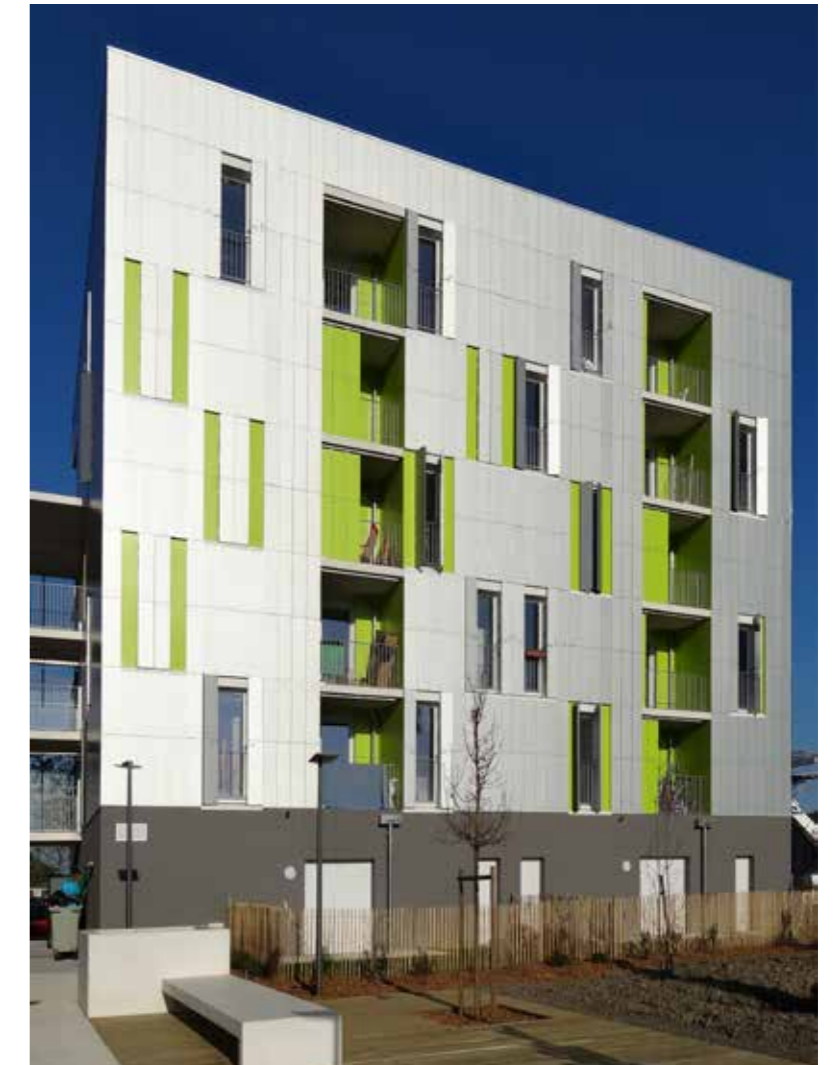
Les Hameaux | Thiais, FR

LONG LASTING AESTHETICS

A residential building and its surroundings need to be warm and inviting. Good looks are highly appreciated, as an attractive environment enhances the comfort of the community and its residents.



Housing Yersin | Paris, FR



Le clos de Netwiller Borderouge | Toulouse, FR

OUTSTANDING AESTHETICS

With Trespa® Meteon® you can create attractive designs and dynamic architecture. The product is available in a wide range of colours and finishes including subtle natural motifs.

To see examples of our many residential reference projects, please go to trespa.com or contact your Trespa sales representative.

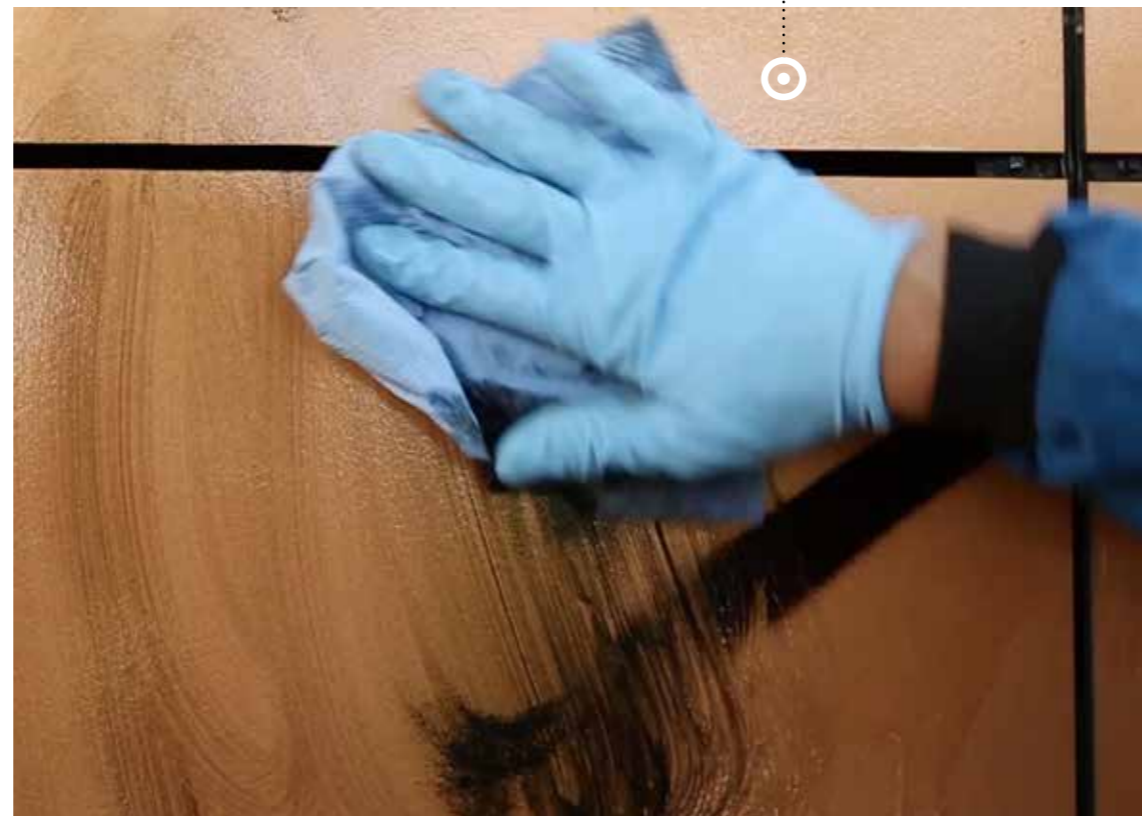
HIGH PERFORMANCE

A clean environment encourages a pleasant way of living. Your building needs to retain its original architecture, design and colours in order to create a living space that can be kept tidy.



“ In my experience Trespa® Meteon® has one of the easiest surface panels to clean. Graffiti can be removed completely, yet the surface quality remains totally unaffected. This is worth mentioning because it is quite unique.”

Mr. Helge Weiss, Directeur Technico Commercial, Tilan sarl, France



LOW MAINTENANCE

Trespa® Meteon® is highly durable and highly impact resistant. It is designed to retain its shape and colour and stays looking great for many years. Thanks to Trespa's proprietary EBC technology, environmental contamination and moisture have little effect on the panel's surface. The closed surface of Trespa® Meteon® practically withstands dirt accumulation, keeping the facade smooth and easy to clean. Contamination such as crayon and graffiti can usually be removed if properly treated, following Trespa's cleaning and maintenance instructions.

ENDURING THE TEST OF TIME

All Trespa® products are tested under extreme conditions. One of which is exposure of the panels to a climate (sun, rain and humidity) equal to the climate that prevails in Florida. The material has a long track record of proven performance and this can be demonstrated by multiple project references – some of them dating back over 20 years - which show no significant difference when compared to newly produced panels.

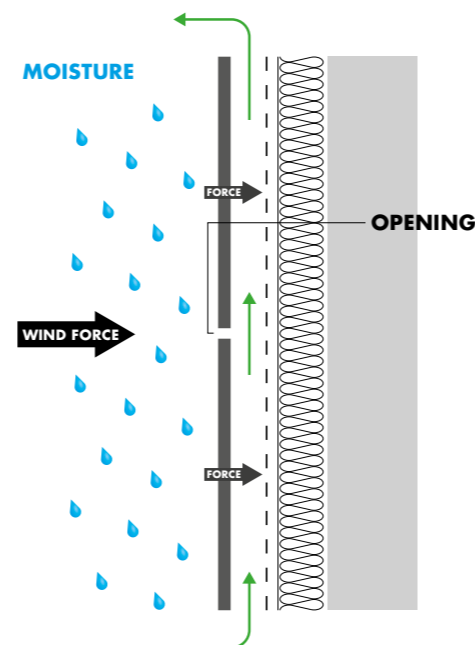
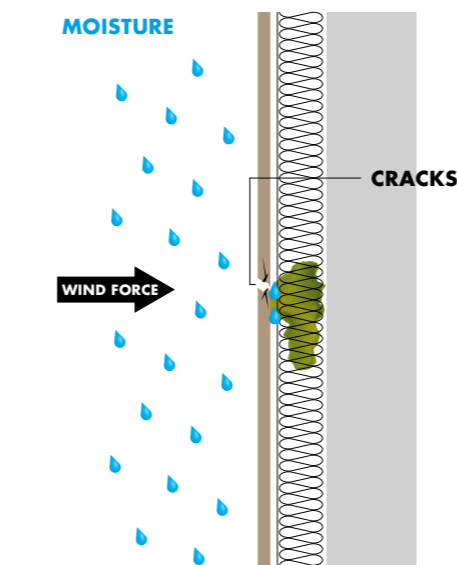


Aambosveld | Heerlen, NL

TRESPA VENTILATED FACADES FOR INDOOR COMFORT

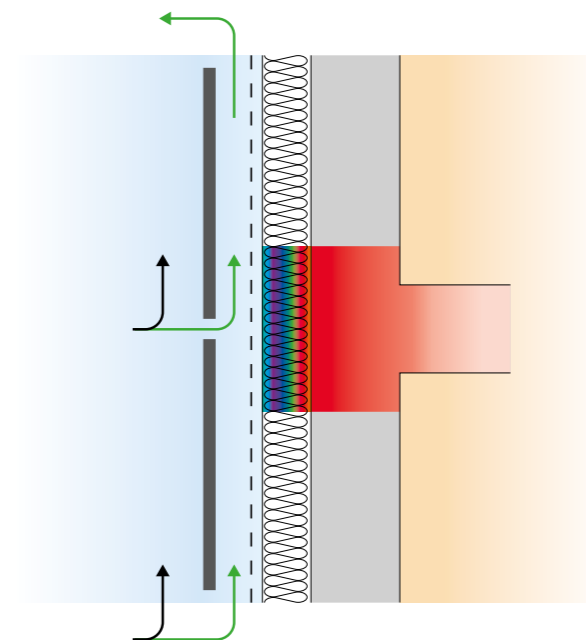
PREVENTING CRACKS AND MOISTURE

In a single skin construction such as render, outside weather conditions can seriously affect the outer skin causing cracks and water infiltration. Trespas® Meteon®, used in a ventilated façade, provides a screen, effectively protecting the building's structure from the effects of extreme weather conditions and without surface cracking. Ventilation behind Trespas® Meteon® panels draws air through the cavity, aiding in the removal of heat and moisture from rain or condensation. The dry and comfortable conditions of the building may have a positive contribution to the indoor environment.



“Occupants noticed already few months after the renovation that moisture problems were gone.”

Mr. Aitor Ubiria Manzarraga, Architect, Spain

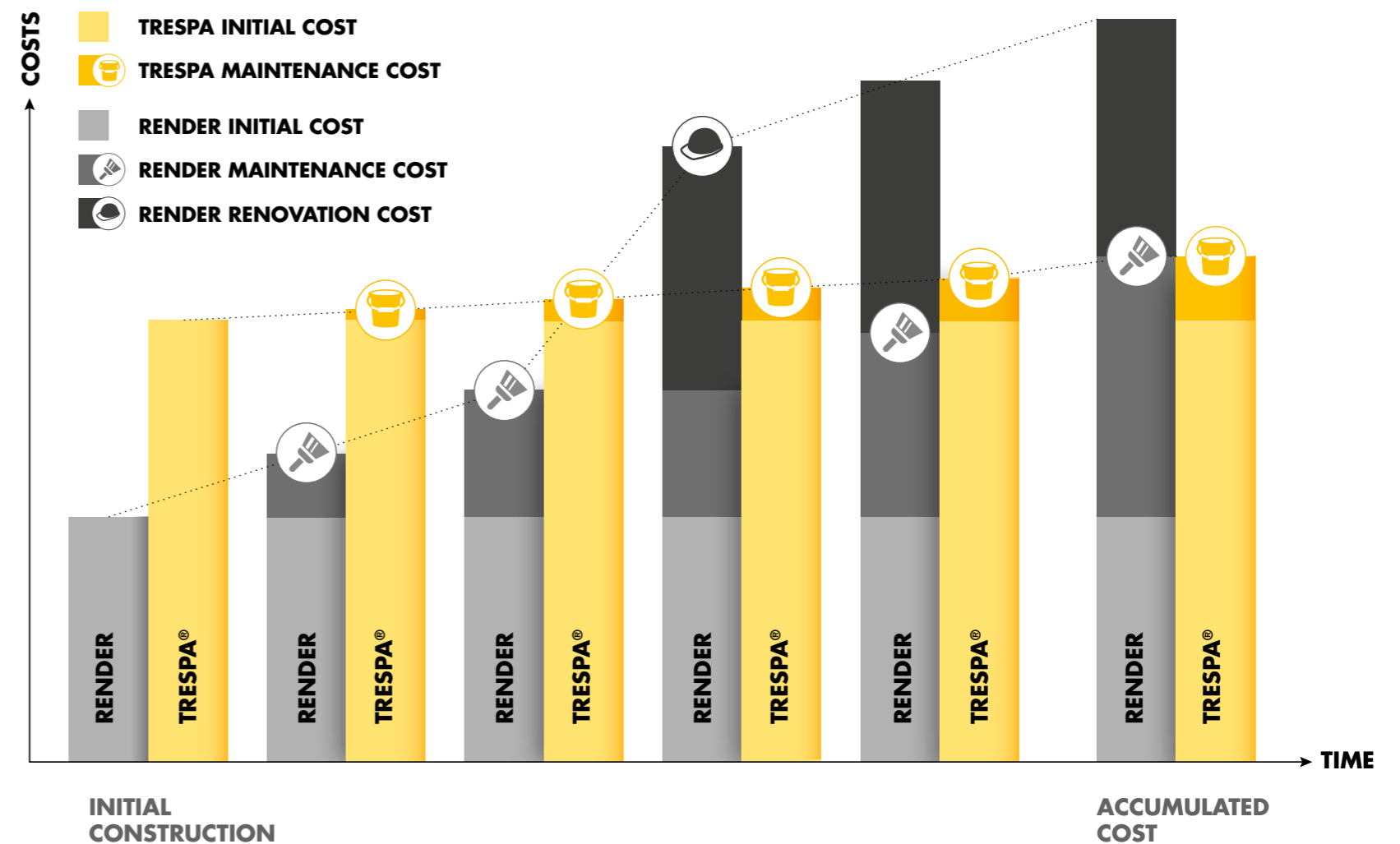


ENERGY SAVING AND INDOOR COMFORT BY EXTERNAL INSULATION

Next to the ventilated façade, the applied external insulation limits the floor thermal bridge, which helps to improve the energy efficiency of the building and keeps comfortable wall temperatures, reducing also condensation risk.

LOW TOTAL COST OF OWNERSHIP

The perfect building has a great appearance that lasts for many years without requiring frequent maintenance or refurbishment. Trespas® Meteon® offers excellent outdoor colour stability and high product performance with low maintenance. Applied in combination with ventilated façade technology, the material supports solutions that deliver the maximum building life cycle while maintaining the building's high value and uninterrupted use. Trespas® Meteon® helps you to achieve your goals of contained costs and sustainable asset management.



CONTACT US

TRESPA INTERNATIONAL B.V.

P.O. Box 110, 6000 AC Weert
Wetering 20, 6002 SM Weert
The Netherlands
www.trespa.com

CUSTOMER SERVICE DESK

EMEA EXPORT

Tel: +31 (0) 495 458 839
Info.Export@Trespa.com

TRESPA UK LTD.

35 Calthorpe Road
Edgbaston
Birmingham, B15 1TS
United Kingdom
Tel: 0808-2340268
Info.UK@Trespa.com

TRESPA NORTH AMERICA LTD.

62 Greene Street (Ground Floor)
New York, NY 10012
United States of America
Tel: +1 800 487 3772
Info.NorthAmerica@Trespa.com

TRESPA CHINA CO. LTD.

Room 2604-05, HuaiHai Plaza
No. 1045 HuaiHai Road (central)
ShangHai 200031
P.R. China
Tel: +86 (0) 21 6288 1299
Info.China@Trespa.com

CUSTOMER SERVICE DESK ASIA/PACIFIC

Tel: +86 (0) 21 5465 8388
Info.APAC@Trespa.com

VISIT US

TRESPA DESIGN CENTRE NEW YORK

62 Greene Street (Ground Floor)
New York, NY 10012
United States of America
Tel: +1 212 334 6888
TDC.NewYork@Trespa.com
www.trespa.com/tdc

TRESPA DESIGN CENTRE WEERT

Wetering 20
6002 SM Weert
The Netherlands
Tel: +31 (0) 495 458 845
TDC.Weert@Trespa.com
www.trespa.com/tdc

TRESPA DESIGN CENTRE BARCELONA

Calle Ribera 5,
08003 Barcelona
Spain
Tel: +34 (0) 93 295 4193
TDC.Barcelona@Trespa.com
www.trespa.com/tdc

TRESPA DESIGN CENTRE SANTIAGO

Eliodoro Yáñez 2831
Torre A - Local 1
Providencia, Santiago
Chile
Tel: +56 2 4069990
TDC.Santiago@Trespa.com
www.trespa.com/tdc

FOLLOW US



DISCLAIMER

GENERAL

These terms apply to the use of this document and such use automatically means that the other party agrees to these terms. The information provided by Trespa International B.V. ("Trespa") in this document is solely indicative. Trespa is unable to warrant the accuracy and completeness of this information. Trespa may change the information included in this document at any time and without further notice. Trespa's customers and third parties must ascertain that they have the most recent document (for the most recent version, please consult: www.trespa.com). No rights can be derived from the information provided; the use of the information is at the other party's risk and responsibility. Trespa does not warrant that the information in this document is suitable for the purpose for which it is consulted by the other party. This document does not contain any design, structural calculation, estimate or other warranty or representation that customers and third parties may rely on. This document does not guarantee any properties of Trespa products. Colours used in Trespa's communications (including but not limited to printed

matter) and in samples of Trespa's products may differ from the colours of the Trespa products to be supplied. Samples are not intended for use in product tests and are not representative of characteristics of the Trespa products. Trespa's products and samples are produced within the specified colour tolerances and the colours (of production batches) may differ, even if the same colour is used. The viewing angle also influences the colour perception. Metallics panels feature a surface whose colour appears to change based on the direction from which it is viewed. The specified colour stability and colour specifications relate only to the decorative surface of the Trespa products, not to the core material and samples of the Trespa products. Trespa products are delivered ex-works with straight, sawn sides. Customers and third parties must have a professional adviser inform them about (the suitability of) the Trespa products for all desired applications and about applicable laws and regulations. Trespa does not warrant the above. The most recent version of the current delivery programme and the Material Properties Datasheet can

be found at www.trespa.info. Only the information in the most recent and valid Material Property Datasheet should be used to select and provide advice regarding Trespa products. Trespa reserves the right to change (the specifications for) its products without prior notice.

LIABILITY

Trespa is not liable (neither contractual nor non-contractual) for any damage arising from or related to the use of this document, except if and to the extent that such damage is the result of wilful misconduct or gross negligence on the part of Trespa and/or its management. The limitation of liability applies to all parties affiliated with Trespa, including but not limited to its officers, directors, employees, affiliated enterprises, suppliers, distributors, agents, and representatives.

GENERAL CONDITIONS

All oral and written statements, offers, quotations, sales, supplies, deliveries and/or agreements and all related activities of Trespa are governed by the Trespa General Terms and Conditions of Sale (*Algemene*

verkoopvoorwaarden Trespa International B.V.) filed with the Chamber of Commerce and Industry for Noord- en Midden- Limburg in Venlo (NL) on February 20th, 2015 under number 24270677, which can be found on and downloaded from the Trespa website, www.trespa.com/documentation. All oral and written statements, offers, quotations, sales, supplies, deliveries and/or agreements and all related work of Trespa North America, Ltd. are governed by the Trespa North America General Terms and Conditions of Sale, which can be found on and downloaded from the Trespa website, www.trespa.com/documentation. A copy of these general conditions of sale will be provided free of charge on request. All general terms and conditions other than the conditions mentioned above are dismissed and do not apply, regardless of whether such terms and conditions are referred to on requests for offers, offer confirmations, stationery and/or other documents of the other party, even if Trespa does not expressly object to such terms and conditions.

INTELLECTUAL PROPERTY

All intellectual property rights and other rights regarding the content of this document (including logos, text and photographs) are owned by Trespa and/or its licensors. Any use of the content of this document, including distribution, reproduction, disclosure, storage in an automated data file or the dispatch of such a file without Trespa's prior written consent is explicitly prohibited. * Trespa, Meteon, Athlon, TopLab, TopLab^{PLUS}, TopLab^{ECO-FIBRE}, TopLab^{VERTICAL}, TopLab^{BASE}, Virtuon, Izeon, Pura NFC, Volkern, Trespa Essentials and Mystic Metallics are registered trademarks of Trespa.

QUESTIONS

Should you have any questions or comments, please do not hesitate to contact Trespa.



VISIT TRESPA.COM FOR THE MOST
UP TO DATE VERSION OF THIS DOCUMENT.

TRESPA®